

A Subsidiary of **SAMSUNG**



RIS500

THE INTRA-ORAL SENSOR

All in One

Design and ergonomic sensor with leading-edge CMOS technology

Simple

Easy installation: Direct USB connection with 2 metres cable

Accessible

Technology at your fingertip

Adaptable

Fits into your practice

THE CONCENTRATION OF TECHNOLOGY MAKES INTRA-ORAL IMAGING EVEN EASIER



Endodontics



Prosthetic and
Implant Surgery



Periodontics



Caries Diagnosis

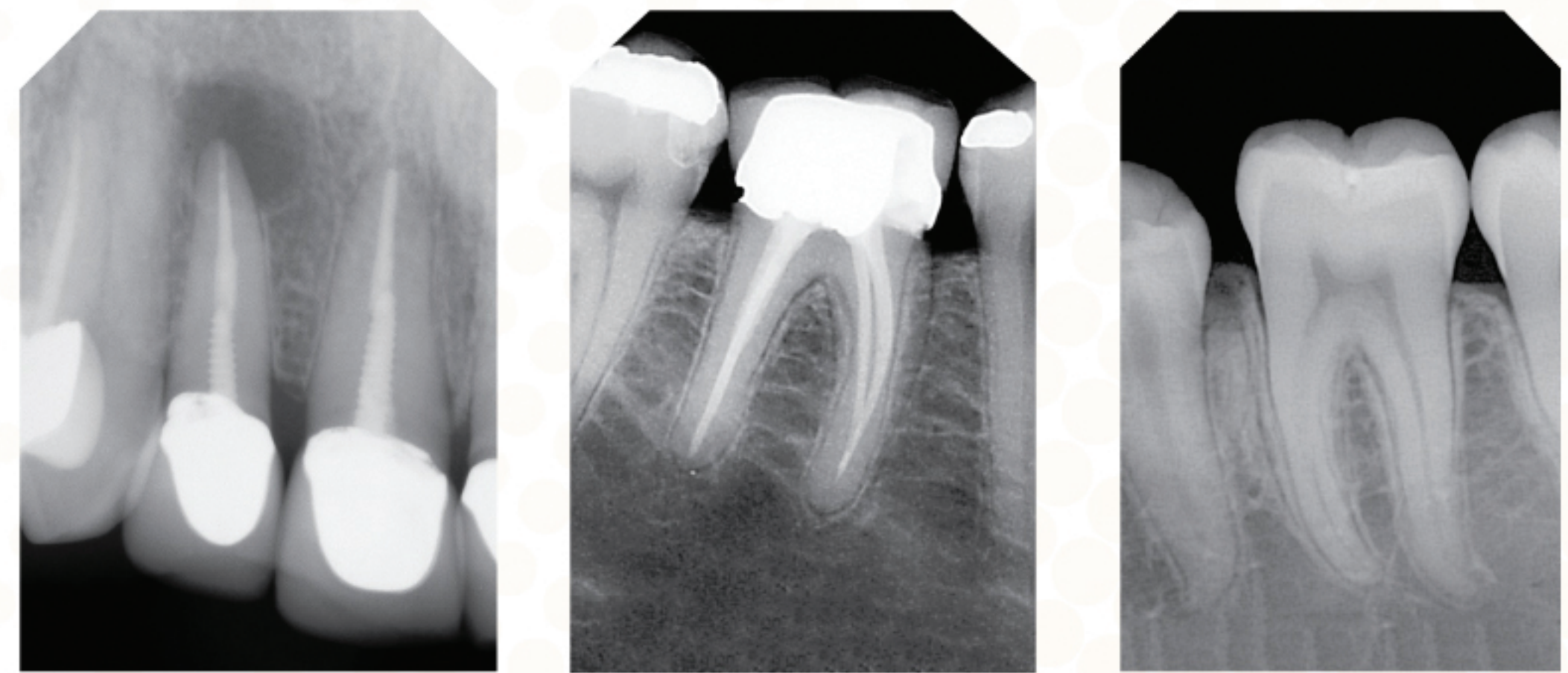


Smart Use

Your Clinic will be closer to SMARTDigital Dentistry through the combination of RIOSensor and Windows tablet PC. It will improve efficiency of workflow and consultation.

Smart Share

Now, Share Intra-oral X-ray images through any kind of smart phone, tablet, PC and laptop with RAYSCAN web providing necessary functions for most intuitive user interface.



Finally, the device is completely water-tight. You have a choice of disinfection methods. (spraying, dipping and more)

RIOSensor

Technical Specifications

Specifications	Size 1	Size 2
Outside dimensions	39x25mm	42x30mm
Image area	30x20mm	34x26mm
Pixel dimensions	20x20um	20x20um
Sensor Technology	Advanced CMOS with optical fiber	Advanced CMOS with optical fiber
Scintillator	CsI. or Gd ₂ O ₃ S	CsI. or Gd ₂ O ₃ S
Number of pixels	1.5 megapixels	2.2 megapixels
Image Resolution	25 lp/mm	25 lp/mm
Connection	USB 2.0 high speed	USB 2.0 high speed
Cable length	2 meters	2 meters

