

SERVICE/SUPPORT: Provided by Ashtel Dental.
 We are pioneers in system integration in the dental industry specializing in installation, phone/remote/on-site support and training for you and your staff. In the case of defects we provide loaners for your convenience. All parts are stocked and ready for shipment.

ASHTELdental

909.434.0911 > f.951.848.9700
 > 7950 cherry ave, suite 103
 fontana, ca 92336 **866.274.8351**
ashteldental.com

owandy

I-MAX EASY
 digital panoramic unit

ASHTELdental



- Most affordable digital pano in its class.
- Perfect for adult & child panoramic, TMJ (open or closed), and sinus.
- USB 2.0 connection.
- TWAIN Compliant
- Supplied with a removable Compact Flash card for storing images without a PC connection.

HI - TECH

PRINTING

MARKETING

We don't just
 SUPPLY you
 with the products
 We FUSE YOUR
 PRACTICE into
 a powerful network system!



866.ashtel.1 > ashteldental.com

Financing options available; provided by HPSC, a GE Company. Prices subject to change without notice. All logos are rights of respective companies.

I - M A X E A S Y D I G I T A L P A N O



Maximum Benefit for

a Minimum Investment

The new I-Max Easy digital panoramic unit is the fruit of a perfect combination of recognized simplicity and high precision digitalization.

I-Max Easy Can Be Used for Most Common Panoramic Radiographs

Standard adult or child panoramic
TMJ (open or closed)
Sinus

Full Integration With QuickVision Software

Easy to use, it offers effective diagnoses based on digital technology and Owandy image processing. This system meets the most standards of any practice and enhances patient satisfaction.

Higher Quality

The image is digitized at source, when the image is taken, to avoid the risk of information loss.

Greater Control

Digital technology is very flexible and enables post-compensation of anomalies to correct any exposure errors.

Easier Storage

The image is available immediately and stored automatically in the patient file. It can easily be sent over the Internet to a colleague or a health insurance agency, or printed on paper.

Increased Safety

The digital sensor technology is more sensitive, allowing the radiation dosage needed to take an image to be significantly reduced.

Instant Availability

Once the image is taken, it is instantly available on your computer screen. No more waiting around - the diagnosis is immediate.

Greater Diagnosis Precision

Zoom in or out, enhance, pseudo-colors, etc. QuickVision software can manipulate the image in ways that help you better understand the patient's pathology.

Additional Benefits

Going digital will cut out developing costs and associated pollutants, and free up the space previously occupied by the darkroom.

A Remarkable Capacity for Adaptation

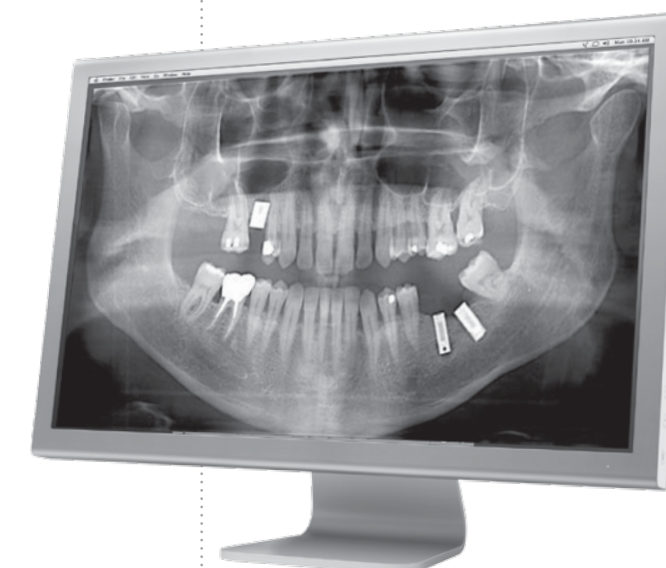
With I-Max Easy, sharing resources becomes the key to profitably managing your practice, regardless of its current configuration in small files and are very easy to store and export.

Single-User or Network Installation

The USB 2.0 interface of the I-Max Easy can be connected easily to any PC with a USB port.

Group Practice

The I-Max Easy is supplied with a Compact Flash card that can be used to store images without a PC connection. The removable card can then be taken to any other PC in the practice.



Technical Specifications

Digital sensor	CCD
Pixel size	48 μm
CCD Resolution	10.4/5.2 pixels/mm
Gray levels	4,096 - 12 bits/pixel
Enlargement ratio	1:2
PC Connection	USB 2.0 - 480 MB/sec
Portable storage	Compact Flash card
kV selection	60-85 kVp, (5 kV by 5 kV)
Power	10 mA
Focal length	0.5
Exposure time	Panoramic 17" adult / 14" child TMJ 9.4"
Voltage	220/230/240 Vac (10%)
Single Phase	50 Hz
Absorbed current	5 A @ 230 V
Power consumption	1.15 kVa
Weight	236 kg
EC compliant	

ashteldental.com/imaxeasy

866.274.8351 > ashteldental.com