



Krystal-X Digital Sensor

The Krystal-X is a new breed of digital sensors. It currently boasts the highest resolution in the market at 26.3 lp/mm. This is an all purpose sensor as it is just as effective used horizontally or vertically.



Krystal-X WiFi Digital Sensor

The Krystal-X WiFi offers complete freedom of movement and sensor sharing from room to room as it uses AdHoc technology for point to point Wi-Fi connection. Simply add a new USB key for every workstation you intend to use with the sensor.



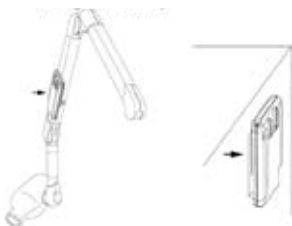
Krystal-X Easy Digital Sensor

The Krystal-X Easy is powered via the USB port, which means it no longer needs a separate power supply. Now you can easily share the sensor with any workstation with a USB port.



Digital Sensor Holders

A complete customized holder system for taking a full mouth series.



Krystal-X Wifi and Easy Mounting Suggestions

- Use the screws provided with the wall mount on a wall, worktop or equipment
- Use the strap provided with the base plate of the box to an X-ray generator, the chair or equipment
- Use the non-slip feet (stuck to the box) on any table or worktop



909.434.0911 > f.951.848.9700
> 7950 cherry ave, suite 103
fontana, ca 92336 866.274.8351
ashteldental.com

SERVICE/SUPPORT: Provided by Ashtel Dental.

We are pioneers in system integration in the dental industry specializing in installation, phone/remote/on-site support and training for you and your staff. In the case of defects we provide loaners for your convenience. All parts are stocked and ready for shipment.

owandy

KRYSTAL-X

digital sensor series

The Krystal-X range:
3 options to meet the most demanding quality requirements

- 2 sizes #1 (600mm²) and #2 (816mm²)
- Wired and Wireless options
- USB 2.0
- Quickvison Multi-User Imaging Software
- TWAIN Compliant
- VISTA Compatible
- 2-year manufacturer's warranty
- Optional on-site installation and training
- Optional bridge integration with all major practice management systems.
- Optical resolution: 26.3 lp/mm
- Sensor type: CCD with a CSI Scintillator and fiber optic plate



ASHTELdental



HI - TECH

PRINTING

MARKETING

We don't just
SUPPLY you
with the products
We FUSE YOUR
PRACTICE into
a powerful network system!



866.ashtel.1 > ashteldental.com

Financing options available; provided by HPSC, a GE Company. Prices subject to change without notice. All logos are rights of respective companies.

KRYSTAL-X • KRYSTAL-X WIFI • KRYSTAL-X EASY

High Definition at a Reduced Dose.

Thanks to leading edge technology that combines a leaded fibre optic plate, a high resolution CCD and a new CSI scintillator screen, the Krystal-X is capable of acquiring high resolution quality images at low doses. The Krystal-X range is designed to meet all your dental imaging needs.

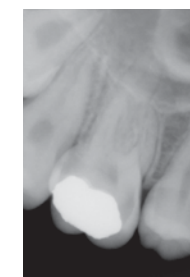
All-Purpose Use and Patient Comfort

Amazingly compact and comfortable, the sensors of the Krystal-X, Krystal-X Wifi and Krystal-X Easy systems offer two sensitive area sizes of 600mm² and 816mm².

The choice of sizes makes the Krystal-X range practical and efficient for all forms of diagnoses: For endodontia in the vertical mode for complete retroalveolar images; and for preventive care in the horizontal mode with bitewing images to easily visualize up to four teeth (with sensor size 2 - 816mm²). The result is simplification and easier diagnosis.

Precision to the Nearest Micro-detail

The quality of the images acquired with the Krystal-X range provide image treatments best suited for all your x-ray diagnostic needs, whether for endodontia, periodontia, surgery, implants or preventive care.



The Krystal-X range offers you a very detailed x-ray image - in 4,096 shades of grey, that is ideal for your periodontal tissue-diagnosis needs.

The Krystal-X range generates contrasted images that are particularly useful for post-operative check-ups of endocanal treatments. These images are contained in small files and are very easy to store and export.

Technical Specifications

Technology:	CCD
Pixel size:	20 μm x 20 μm (Size 1) 19 μm x 19 μm (Size 2)
CCD Matrix:	1500 x 1000 pixels (Size 1) 1790 x 1260 pixels (Size 2)
Theoretical resolution of CCD:	26.3 lp/mm
Typical resolution of sensor:	> 20 lp/mm
Sensitive area:	30mm x 20 mm (600mm ² Size 1) 34mm x 24mm (816mm ² Size 2)
Grey scale:	12 bits, 4,096 levels of grey
Cables:	3m for Krystal-X, and Krystal-X Easy, 0.85m for Krystal-X Wifi
Sealing standard:	IPX7 Waterproof
CE compliant:	directive CE 93/42
Standards:	EN 60601-1 (medical appliance safety) EN 60601-1-2 (electromagnetic compatibility)

Krystal-X Connection Box

Maximum external dimensions:	surface 16cm x 16cm x 6cm with built-in sensor storage space.
Bus:	USB 2.0 compatible
CE compliance:	directive CE 93/42
Standards:	EN 60601-1, applicable to medical appliances
Power supply:	12V, 0.6A with included power supply unit

Krystal-X Wifi Connection Box

Maximum external dimensions:	185 x 84 x 24 mm with built-in sensor storage space.
Transmission:	Wifi connection, point to point (ad hoc) connection with the computer. Wifi module with USB interface supplied with directional antenna to connect to the computer Transmission time: 2 to 3 sec
Power supply:	3 x 1.2 volt AA batteries, capacity 2.5 mAh each Quick charge 75 minutes (3.5mm jack connection) Time between recharges: 2h continuous use or 60 shots approximately

Krystal-X Easy Connection Box

Maximum external dimensions:	185 x 84 x 24 mm with built-in sensor storage space
Connection:	USB 2.0 High Speed compatible USB 1.1 Full Speed
Power supply:	Runs off the USB port

Krystal-X

DIGITAL IMAGING

Quality high-resolution image acquisition. Allows for sensor sharing between several chairs with the USB box which has an external power supply for maximum length from the computer. The Krystal-X provides you with a guaranteed maximum lifespan.

Krystal-X Wifi

SET YOUR IMAGES FREE

With the same functionalities as the Krystal-X, the Krystal-X Wifi captures and instantaneously transmits images wirelessly to the computer.

Krystal-X Easy

DIGITAL IMAGING IN ALL SIMPLICITY

The new Krystal-X Easy sensor has been conceived to integrate with your X-ray generator, while maintaining the possibility to quickly move it from one operatory to another. It is USB powered with the same functionalities as the Krystal-X plus a portable system for greater mobility.

