

# ***ECO - 3***

---

 **Belmont**<sup>®</sup>

*Assistant's Side Console*



***ECO - SYS***  
*Cabinetry*

7950 Cherry Ave. Suite 103, Fontana, CA 92336 , 866.274.8351 • f 951.848.9700 [www.ashteldental.com](http://www.ashteldental.com)

# ECO - 3 Features

**Options:** Tapmaster™ Cabinet Door Activation



Stainless Steel Sink and Chrome Faucet

Chrome Soap Dispenser

Waste Receptacle

Large H.D. Laminate Countertop Work Area with 3" Backsplash



12" Storage Area with Adjustable Shelf



(2) 5" and (2) 7" 100 lb. Unigrass System Drawers



24" Under Sink Storage Area with Waste Container

Base with Leveling Feet

3 mm PVC Edges On All Doors and Drawers

Stainless Steel Pulls On All Doors and Drawers

Left or Right Consoles Available

Overall Dimensions: 55-1/2" (L) x 37" (H) x 20-7/8" (D)  
Right Console Shown in Kensington Maple/Crystalline Braun

## Available Color Combinations:



**ECO - SYS**  
Cabinetry

**Ships FAST!!! 10 Working Days or Less**

**Belmont**

7950 Cherry Ave. Suite 103, Fontana, CA 92336 , 866.274.8351 • f 951.848.9700 [www.ashteldental.com](http://www.ashteldental.com)

Items may be shown with optional equipment, please consult Customer Service for complete details. Belmont® reserves the right to change standards, options, and prices without notice.

BRH00040 ver. 1.0



# ***ECO - SYS***

*Cabinetry*

**Belmont**<sup>®</sup>



***ECO-9***  
*Mobile Cart*

***ECO-1***  
*Doctor's Console*



***ECO-6***  
*Rear Treatment Console*



***ECO-3***  
*Assistant's Side Console*



## ECO - 6

### *12 O'Clock Rear Treatment Center*

#### **Features:**

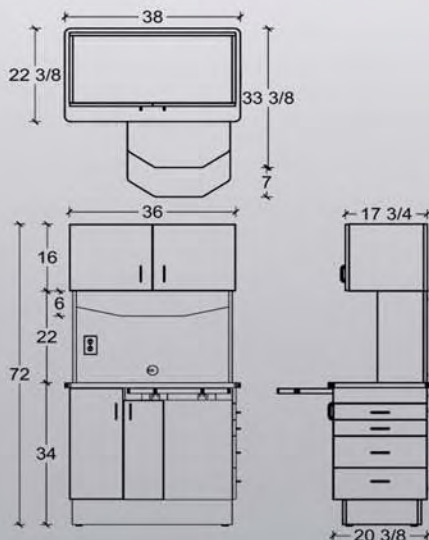
- See Back Page for Available Color Combinations  
(Shown in Kensington Maple/Crystalline Braun)
- Left and Right Modules Available
- 3mm PVC Edges On All Doors and Drawers
- Stainless Steel Pulls On All Doors and Drawers
- 36" Wide Upper Storage with 8 Adjustable Shelves
- Clock / Timer
- Task Light
- Duplex Electrical Outlet
- H.D. Laminate on Countertops
- Pull-Out Countertop Work Surface
- Lower Storage Area with 1 Adjustable Shelf
- (2) 2-5/8" and (2) 8-1/4" Easy Accessible Side Drawers

#### **Options:**

- BDS-2564 Doctor's 3 Handpiece Control
- BDS-2571 Assistant's Vacuum Package
- Additional HVE with Hose
- 36" Pass-Thru Upper Storage

 ***Ships FAST!!! 10 Working Days or Less***

#### **ECO-6 Specifications:**







## ECO - 3

*Assistant's Side Console*

### Features:

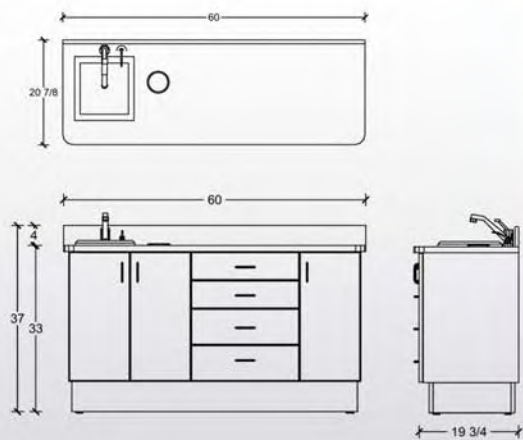
- See Back Page for Available Color Combinations (Shown in Kensington Maple/Crystalline Braun)
- H.D. Laminate on Countertops
- Left and Right Modules Available
- 3mm PVC Edges On All Doors and Drawers
- Stainless Steel Pulls On All Doors and Drawers
- Stainless Steel Sink with Chrome Faucet
- Chrome Soap Dispenser
- Waste Receptacle
- 24" Under Sink Storage Area with Waste Basket
- 12" Storage Area with Adjustable Shelf
- (2) 5" and (2) 7" 100lb. Unigrass System Drawers
- Base with Leveling Feet

### Options:

- Tapmaster™ Cabinet Door Faucet Activation

**Ships FAST!!! 10 Working Days or Less**

### ECO-3 Specifications:



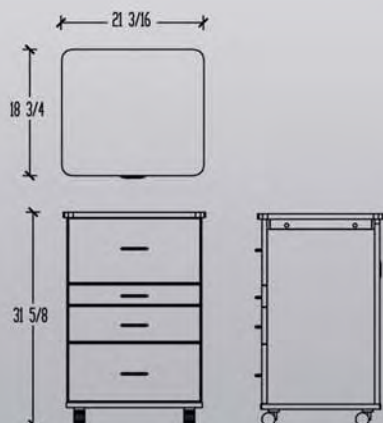
## ECO - 9

*Mobile Cart*

### Features:

- See Back Page for Available Color Combinations (Shown in Kensington Maple/Crystalline Braun)
- H.D. Laminate on Work Surface
- Left to Right Sliding Work Surface or Available Optional Front to Back Sliding Top
- 9" Deep Under Work Surface Storage Bin with Electrical Access Grommet
- 3mm PVC Edges On All Drawers and Deck
- Stainless Steel Pulls On All Drawers
- Extra Stainless Steel Pull to Assist with Mobility
- (4) Swivel Casters for Mobility and Stability

### ECO-9 Specifications:



**Ships FAST!!! 10 Working Days or Less**



## ECO - 1

*Doctor's Console*

### Features:

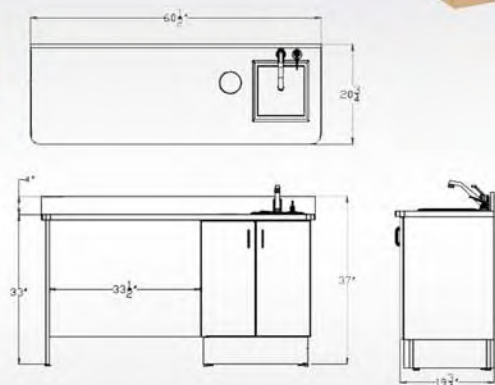
- See Below for Available Color Combinations (Shown in Kensington Maple/Crystalline Braun)
- H.D. Laminate on Countertops
- Left and Right Modules Available
- 3mm PVC Edges On Doors
- Stainless Steel Pulls On Doors
- Stainless Steel Sink with Chrome Faucet
- Chrome Soap Dispenser
- Waste Receptacle
- 24" Under Sink Storage Area with Waste Basket
- Base with Leveling Feet

### Options:

- Tapmaster™ Cabinet Door Faucet Activation
- BDS-2555 Side Delivery Unit

**Ships FAST!!! 10 Working Days or Less**

### ECO-1 Specifications:



### Available Color Combinations:

