

ECO - 9

Belmont[®]

Mobile Cart



ECO - SYS
Cabinetry

7950 Cherry Ave. Suite 103, Fontana, CA 92336 , 866.274.8351 f 951.848.9700 www.ashteldental.com

ECO - 9 Features

9" Deep Under Counter Storage Bin
with Electrical Access Grommet



Standard Left to Right Sliding
Countertop Work Surface or
Available with Optional Front to
Back Sliding Top



Extra Stainless Steel
Pull to Assist with Mobility

3 mm PVC Edges On All
Drawers

Stainless Steel
Pulls

3 mm PVC Edging
on Deck

(4) Swivel Casters
for Mobility and
Stability



(1) 2", (1) 4" and (1) 7" 100 lb.
Unigrass System Storage Drawers



The ECO-9 *Mobile Cart* Stores Neatly
Below The ECO-1 *Doctor's Console**
*ECO-1 Sold Separately

ECO-9 Overall Dimensions: 21-3/16" (L) x 31-5/8" (H) x 18-3/4" (D)
Shown in Kensington Maple/Crystalline Braun

Available Color Combinations:



ECO - SYS
Cabinetry

Ships FAST!!! 10 Working Days or Less

Belmont®

7950 Cherry Ave. Suite 103, Fontana, CA 92336 , 866.274.8351 f 951.848.9700 www.ashteldental.com

Items may be shown with optional equipment. Please consult Customer Service for complete details. Belmont® reserves the right to change standards, options, and prices without notice.

ECO - SYS

Cabinetry

 **Belmont**[®]



ECO-9
Mobile Cart

ECO-1
Doctor's Console



ECO-6
Rear Treatment Console



ECO-3
Assistant's Side Console



ECO - 6

12 O'Clock Rear Treatment Center

Features:

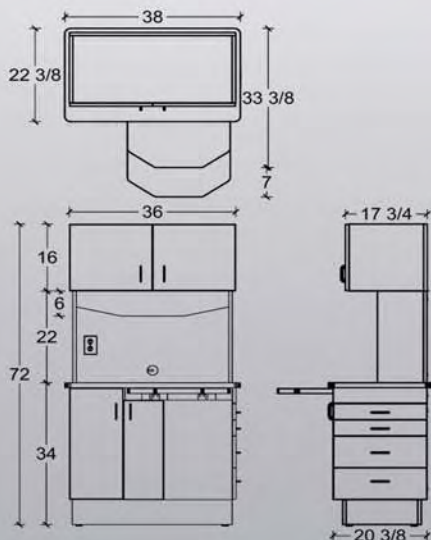
- See Back Page for Available Color Combinations
(Shown in Kensington Maple/Crystalline Braun)
- Left and Right Modules Available
- 3mm PVC Edges On All Doors and Drawers
- Stainless Steel Pulls On All Doors and Drawers
- 36" Wide Upper Storage with 8 Adjustable Shelves
- Clock / Timer
- Task Light
- Duplex Electrical Outlet
- H.D. Laminate on Countertops
- Pull-Out Countertop Work Surface
- Lower Storage Area with 1 Adjustable Shelf
- (2) 2-5/8" and (2) 8-1/4" Easy Accessible Side Drawers

Options:

- BDS-2564 Doctor's 3 Handpiece Control
- BDS-2571 Assistant's Vacuum Package
- Additional HVE with Hose
- 36" Pass-Thru Upper Storage

Ships FAST!!! 10 Working Days or Less

ECO-6 Specifications:





ECO - 3

Assistant's Side Console

Features:

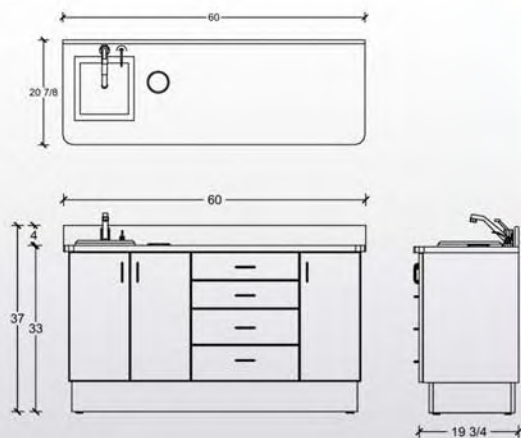
- See Back Page for Available Color Combinations (Shown in Kensington Maple/Crystalline Braun)
- H.D. Laminate on Countertops
- Left and Right Modules Available
- 3mm PVC Edges On All Doors and Drawers
- Stainless Steel Pulls On All Doors and Drawers
- Stainless Steel Sink with Chrome Faucet
- Chrome Soap Dispenser
- Waste Receptacle
- 24" Under Sink Storage Area with Waste Basket
- 12" Storage Area with Adjustable Shelf
- (2) 5" and (2) 7" 100lb. Unigrass System Drawers
- Base with Leveling Feet

Options:

- Tapmaster™ Cabinet Door Faucet Activation

Ships FAST!!! 10 Working Days or Less

ECO-3 Specifications:



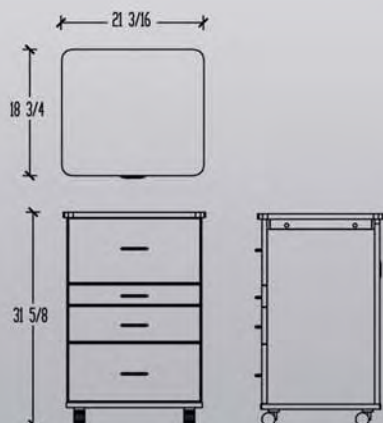
ECO - 9

Mobile Cart

Features:

- See Back Page for Available Color Combinations (Shown in Kensington Maple/Crystalline Braun)
- H.D. Laminate on Work Surface
- Left to Right Sliding Work Surface or Available Optional Front to Back Sliding Top
- 9" Deep Under Work Surface Storage Bin with Electrical Access Grommet
- 3mm PVC Edges On All Drawers and Deck
- Stainless Steel Pulls On All Drawers
- Extra Stainless Steel Pull to Assist with Mobility
- (4) Swivel Casters for Mobility and Stability

ECO-9 Specifications:



Ships FAST!!! 10 Working Days or Less



ECO - 1

Doctor's Console

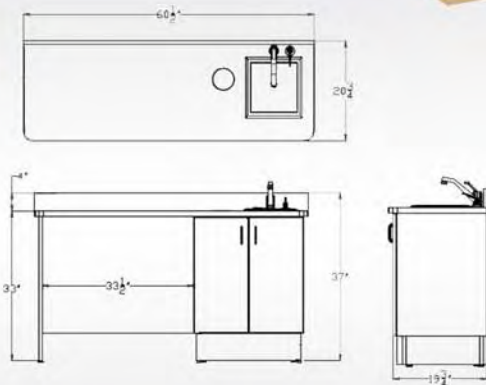
Features:

- See Below for Available Color Combinations (Shown in Kensington Maple/Crystalline Braun)
- H.D. Laminate on Countertops
- Left and Right Modules Available
- 3mm PVC Edges On Doors
- Stainless Steel Pulls On Doors
- Stainless Steel Sink with Chrome Faucet
- Chrome Soap Dispenser
- Waste Receptacle
- 24" Under Sink Storage Area with Waste Basket
- Base with Leveling Feet

Options:

- Tapmaster™ Cabinet Door Faucet Activation
- BDS-2555 Side Delivery Unit

ECO-1 Specifications:



Ships FAST!!! 10 Working Days or Less



Available Color Combinations:

