

 Belmont®



**PHOT-X II**

# PHOT-X II

Intra-oral X-ray System



Control module shown with optional coiled wire switch for remote activation

- Constant potential DC X-ray system reduces patient radiation exposure
- Crisp digital or film radiographic imaging
- 60 or 70 kV settings for optimization of diagnostic imaging techniques
- Easy to use, intuitive controls
- Lightweight X-ray head is easily positioned
- Wall mount, Cabinet mount or optional Pass-Thru mount



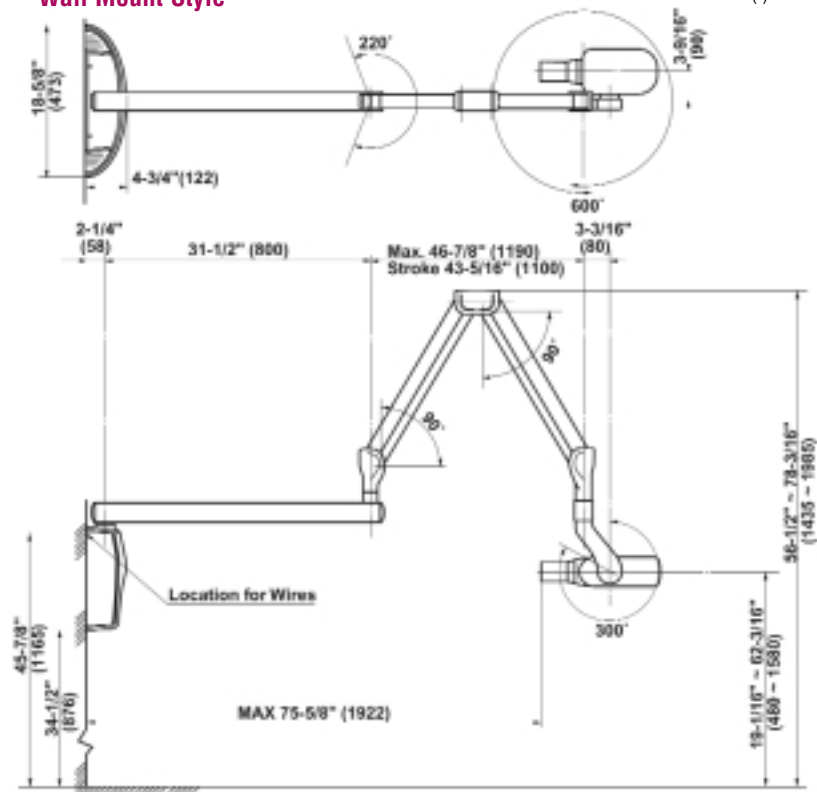
# PHOT-X II

## Intra-oral X-ray System

### Dimensions:

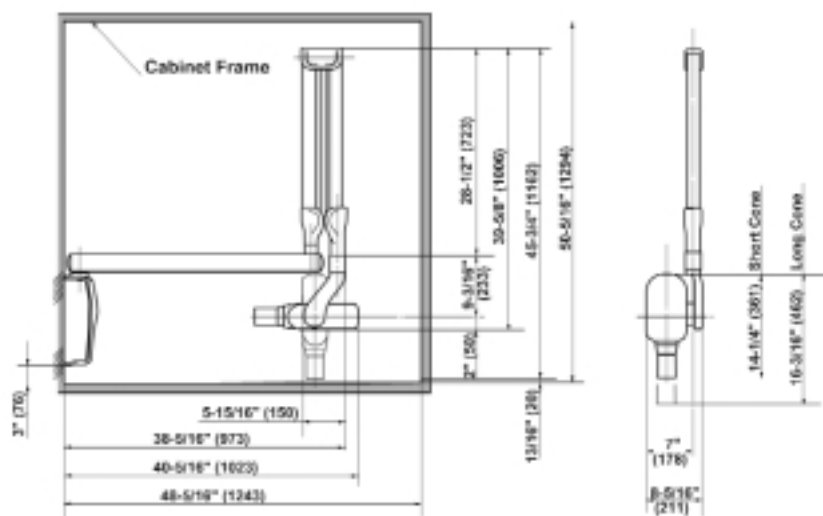
#### Wall Mount Style

( )=mm



#### Pass-Thru Mount Style

( )=mm



### Specifications:

Constant Potential DC X-ray Generator

60kV/70kV -Selectable

4mA/7mA -Selectable

0.7mm Focal Spot

Line Voltage Range: 108-132 VAC

Rated Line Current: 10.8 A @ 70 kV, 7 mA

Exposure Time: 0.01-3.2 seconds

Minimum Filtration in useful beam:

2.0 mm Al equivalent at 70kV

Control Module:

7-1/4" x 6-1/8" x 1-5/16"

Source to Skin Distance (SSD):

Standard Cone: 203mm

Optional Long Cone: 305mm

Optional Rectangular Cone: 203mm

Maximum Reach:

with standard 31.5" Arm: 75-5/8"

with optional 20" Arm: 64-1/8"

with optional 12" Arm: 56-1/8"

Additional Options:

Plate for 4x4 stud mounting

Coiled wire remote switch

2 Year Limited Warranty

 **Belmont**®

7950 Cherry Ave. Suite 103,  
Fontana, CA 92336

**866.274.8351 • f 951.848.9700**

**www.ashteldental.com**

Copyright© 2005 Belmont Equipment.

Models, Prices and Specifications are subject to change without notice.

BRH00024

REV041205