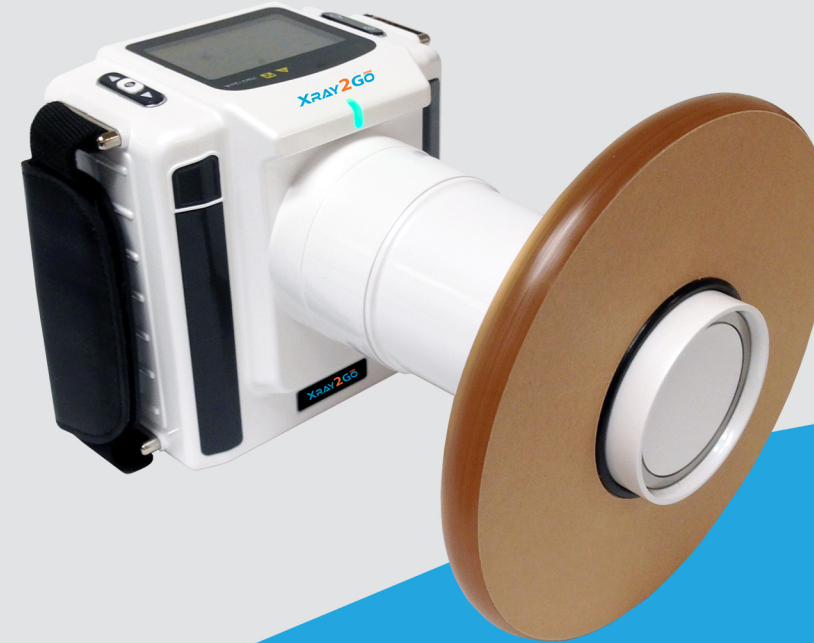


Comparison Chart Handheld X Conventional Wall Mount Xray

| Characteristics | Wall-Mount X-Ray Devices | vs. | XRAY2GO mini |
|------------------------------|--|-----|--|
| Time Saving | Operator must leave the room during radiographs. | vs. | Operator can stay with the patient. XRAY2GO is SAFE! |
| Footprint & Space Required | Permanently affixed to the wall. | vs. | Easy to take an X-ray anytime during the procedure |
| Cordless and Battery Powered | Full time power connection required. | vs. | Cordless, Rechargeable Batteries. |
| Fewer units required | One unit for every 1 or 2 operatories. | vs. | Just one XRAY2GO can serve up to 4 operatories. |
| Ready to Use | Previous installation required. | vs. | No special accommodations or installation required. |
| Convenience of Use | Hard arms to manipulate and position. | vs. | Point and Shoot! Extremely convenient. |
| Superior Image Quality | Varying Resolution. | vs. | Outstanding Resolution |
| No Drift | Bulky arms can drift during the procedure. | vs. | No Arms! Reduce interference from patient movement. |
| Cost | \$\$\$\$ | vs. | \$\$\$ |
| Current | AC or DC | vs. | DC UNIT |

XRAY2GO^{MINI}



LIGHTER, SMALLER
Latest Toshiba X-ray Tube
Better X-ray Quality
Safe - Lower Patient Dose

for more information or to schedule a demonstration
 in your office, contact your local dealer today!

XRAY2GO
TECHNICAL SPECS

| | |
|--------------------|---|
| X-ray installation | Tube voltage: 70kV Tube current: 2mA Heat Capacity: 8.5KHU |
| X-ray Generator | Type: High Frequency Inverter |
| X-ray Tube | Anode Type: Stationary Anode Angle: 12.5 degrees Focal Spot: 0.4mm Toshiba Oil Cooled Tube |
| X-ray Control | Exposure time set 0.01 ~ 2.0sec (0.01 sec step) |
| Power Requirement | 25.2 VDC Includes Battery & Scatter Shield |
| Weight | 5.2 lbs. |
| Dimensions | 4.84" (W) x 8.66" (D) x 5.27" (H) |

ALL-NEW MODEL!
FDA Registered & Approved



100 East Granada Blvd. Suite 219
 Ormond Beach, FL 32176
 info@denterpriseintl.com
 www.denterpriseintl.com

Authorized Dealer

DENTERPRISE
 INTERNATIONAL, INC
 www.denterpriseintl.com

XRAY2GO^{MINI}



REPLACES YOUR OLDER X-RAY HEADS

Go Digital - Fast Easy & Economical!

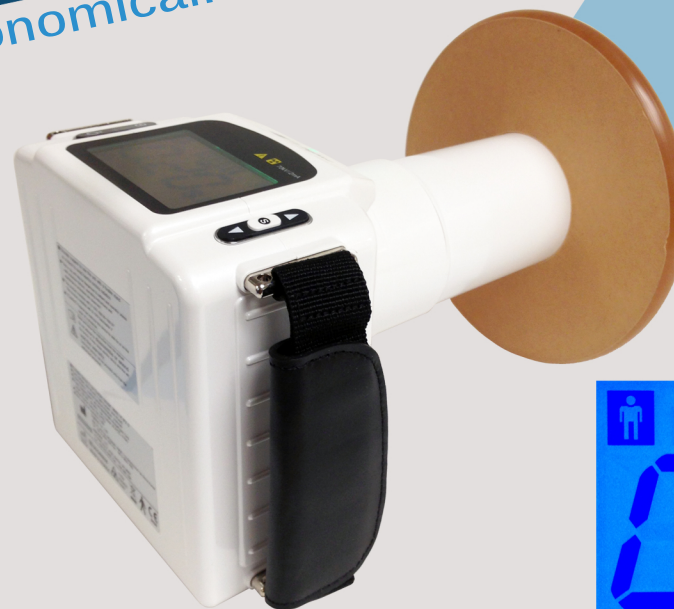
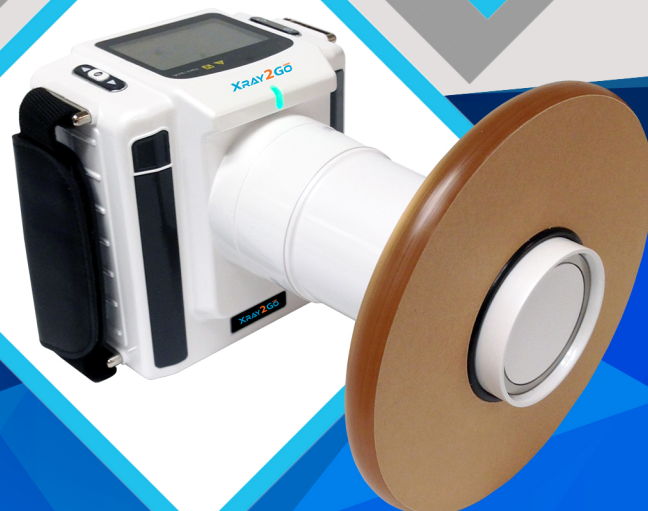
The portable X-ray solution for new practices!

A great alternative to bulky wall-mounted X-ray generators!
Go digital - Fast, Easy & Economical

Why Xray2Go mini?

- DC Unit
- No Installation
- Reduce Retakes
- No Walls Required
- High Image Quality
- Camera-like Design
- Convenient & Mobile
- Low Patient Exposure
- Portable for Ease of Use
- FDA Registered - K152859
- Take X-rays in any operatory
- Replaces Wall-Mounted Units
- Film, Plate & Sensor Capability
- Ideal for Children & Phobic Patients
- Stay with your patient the entire time
- Take X-rays at any point in the procedure

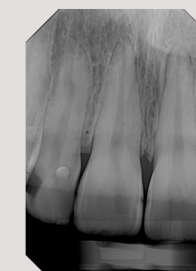
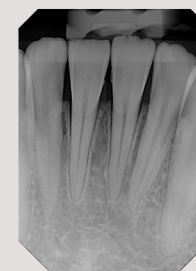
BENEFITS
 RECHARGEABLE
 LIGHTWEIGHT
 ECONOMICAL
 PRACTICAL
 VERSATILE
 SIMPLE
 SAFE



Ready for Regular Film



Ready for Sensor/PSP



**SAVE UP TO 35%
 ON THIS PORTABLE
 X-RAY GENERATOR**